

Craftsman-inspired homes made more  
*beautiful by nature.*



*Cimarron Elevation I*

*Shapiro*



*Cimarron Elevation II*

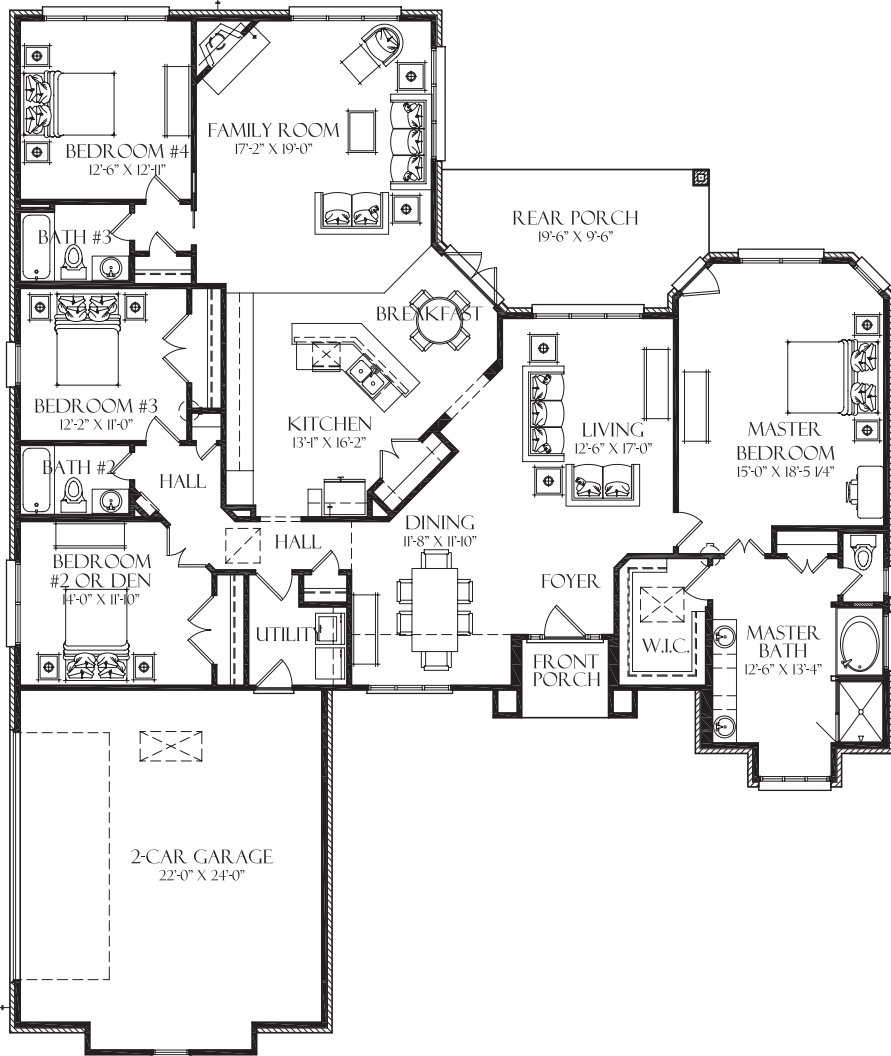
*Shapiro*



*Cimarron Elevation III*

*Shapiro*

## CIMARRON



- Custom Built on Job Site
- 30-Year Warranty Architectural Shingles
- Hardwood Flooring in Foyer, Dining and Living Room
- Ceramic Tile Flooring in Kitchen, Breakfast Room and Utility Room
- Ceramic Tile Flooring in all Bathrooms
- Ceramic Tile Kitchen Counter Tops with Full Ceramic Tile Backsplash
- Whirlpool Tub in Master Bath
- Designer Delta Faucets in all Bathrooms
- Spacious Walk-In Closets
- Pantry Closet in Kitchen/Breakfast Area
- Contrasting Wall and Trim Colors
- Designer Custom Cabinetry
- Pre-Wired for Two Ceiling Fans
- Pre-Wired for One Set of Flood Lights
- General Electric Appliances with Smooth Top Range
- Fireplace with Gas Log Lighter
- Energy Efficient Doors and Windows
- R-13 Wall Insulation
- R-30 Ceiling Insulation
- Smooth Ceilings throughout Interior of House
- Custom Interscapes Package including: Prewire for Audio, Security (*all Exterior Doors and Windows*) and Digital Network
- ICI Deluxe Fortis Exterior Paint with Lifetime Warranty
- Low-Maintenance Brick and Hardiplank Exteriors
- Low-Maintenance Hardiplank on Exterior Trim (*Soffits, Fascia & Frieze*)
- Low-Maintenance, 20-Year Warranty Windows
- 50-Gallon Rheem or Rudd Water Heater
- Designer Door Hardware Finishes including Oil-Rubbed Bronze and Antique Nickel
- Dead Bolts on all Exterior Doors
- Landscaping Package with a Fully Sodded Yard
- One-Year Builder Warranty

*Quality homes. Quality of life.*

**LOWDERNEW HOMES**  
A COLONIAL COMPANY... Since 1956

LOWDER NEW HOMES makes no representation, guaranty or warranty regarding the square footage, exact layout or specifications of the home based on this marketing material. Floor plans may be reversed on the home site. The rendering of the elevation of this home is an artist's interpretation only. Actual specifications are contained in the construction documents for a specific home site.

