

Craftsman-inspired homes made more  
*beautiful by nature.*



*Perdido Elevation I*

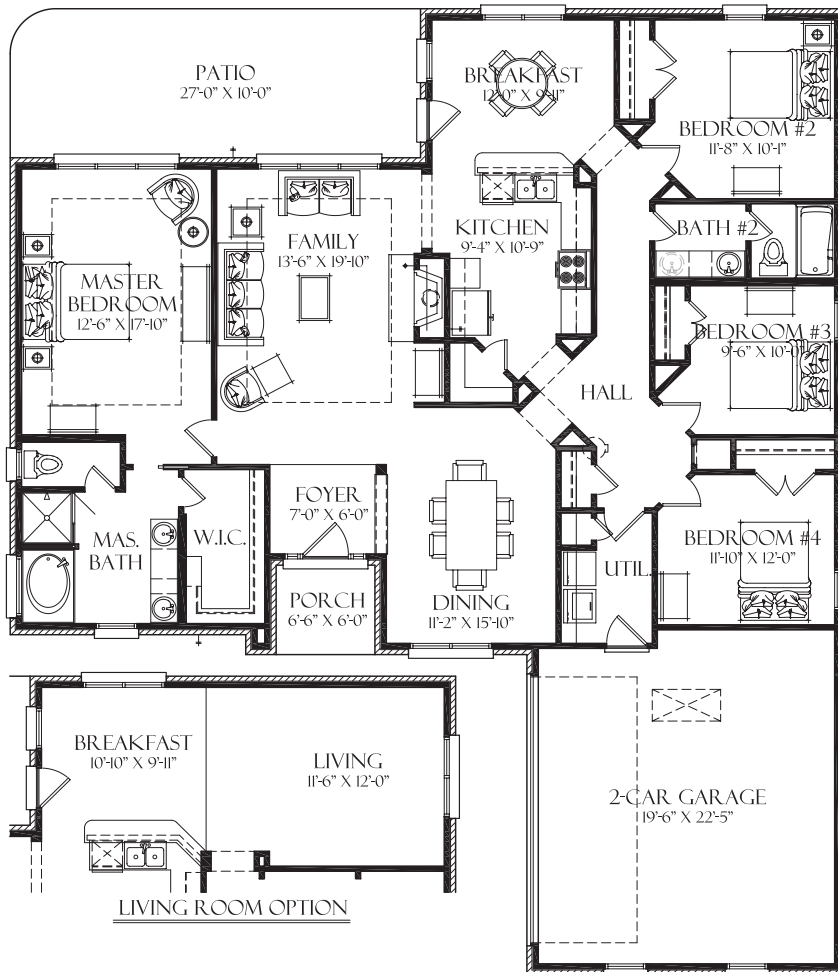


*Perdido Elevation II*



*Perdido Elevation III*

## PERDIDO



- Custom Built on Job Site
- 30-Year Warranty Architectural Shingles
- Ceramic Tile or Hardwood in Foyer
- Ceramic Tile Flooring in Bathrooms
- Ceramic Tile Flooring in Kitchen and Breakfast Room
- Easy-Care Vinyl Flooring in Utility Room
- Spacious Walk-In Closet in Master Suite
- Designer Delta Faucets in all Bathrooms
- Whirlpool Tub in Master Bath with Separate Shower
- Pre-Wired for Two Ceiling Fans
- Smooth Ceilings throughout Interior of House
- Contrasting Wall and Trim Colors
- General Electric Appliances featuring a Smooth Top Range
- Designer Custom Cabinetry
- Laminate Kitchen Counter Tops with Ceramic Tile Backsplash
- Cultured Marble Vanity Tops
- Shelving in Utility Room
- Energy Efficient Doors and Windows
- Fireplace with Gas Log Lighter
- Custom Interscapes Package including: Prewire for Audio, Security (*all Exterior Doors and Windows*) and Digital Network
- Landscaping Package with a Fully Sodded Yard
- ICI Deluxe Fortis Exterior Paint with Lifetime Warranty
- Low-Maintenance Brick and Hardiplank Exteriors
- Low-Maintenance Hardiplank Exterior Trim (*Soffits, Fascia & Frieze*)
- Low-Maintenance, 20-Year Warranty Windows
- 50-Gallon Rheem or Rudd Water Heater
- Dead Bolts on all Exterior Doors
- Designer Door Hardware Finishes including Oil-Rubbed Bronze and Antique Nickel
- R-30 Ceiling Insulation
- R-13 Wall Insulation
- One-Year Builder Warranty
- *One-Year Builder Warranty*