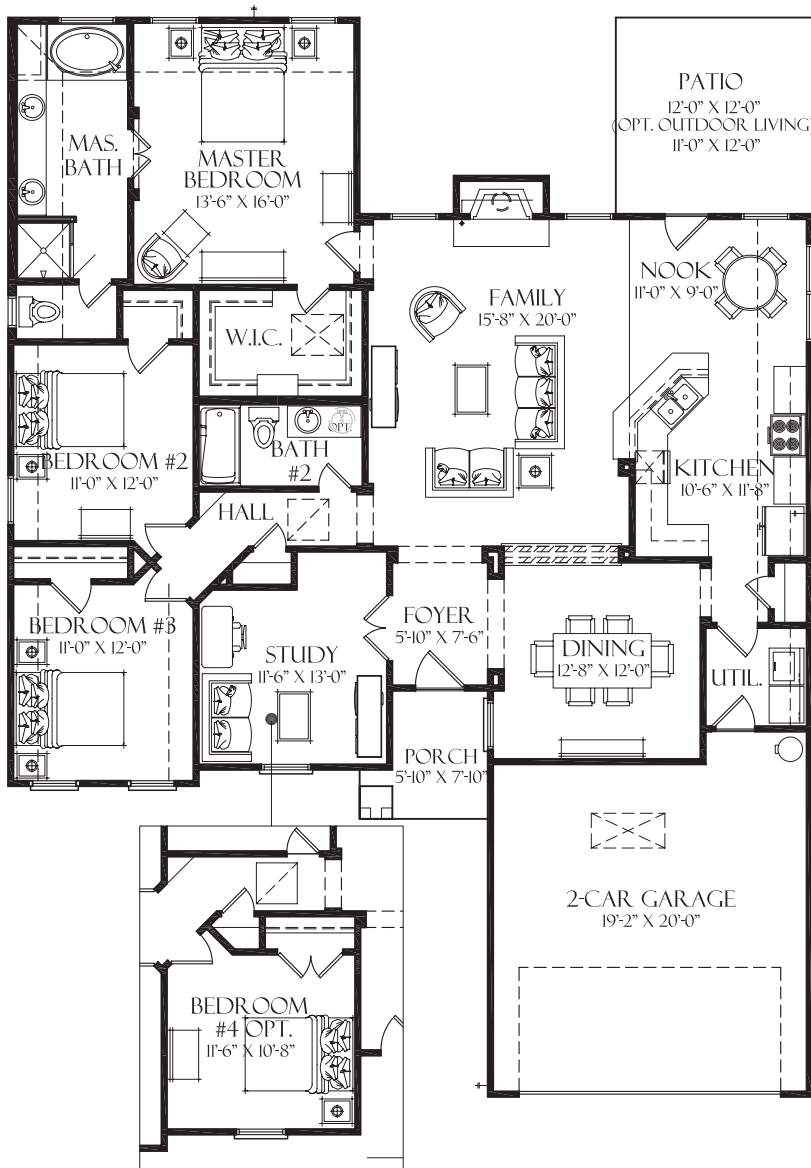


ST. JOE



- Custom Built on Job Site
- 20-Year Warranty Fiberglass Roofing Shingles
- Ceramic Tile or Hardwood in Foyer
- Ceramic Tile Flooring in Bathrooms
- Pre-Wired for Two Ceiling Fans
- 10' Textured Volume Ceilings in Master Suite and Living Areas
- Easy-Care Vinyl Flooring in Kitchen, Breakfast Room and Utility Room
- Spacious Walk-In Closet in Master Suite
- Designer Delta Faucets in all Bathrooms
- Contrasting Wall and Trim Colors
- General Electric Appliances featuring a Smooth Top Range
- Designer Custom Cabinetry
- Laminate Kitchen Counter Tops with a Full Laminate Backsplash
- Cultured Marble Vanity Tops
- Shelving in Utility Room
- Energy Efficient Doors and Windows
- R-13 Wall Insulation
- R-30 Ceiling Insulation
- Fireplace with Gas Log Lighter
- Landscaping Package with a Fully Sodded Yard
- Garden Tub with Separate Shower
- Custom Interscapes Package including: Prewire for Audio, Security (*all Exterior Doors and Windows*) and Digital Network
- ICI Deluxe Fortis Exterior Paint with Lifetime Warranty
- Low-Maintenance Brick and Hardiplank Exteriors
- Low-Maintenance Hardiplank on Exterior Trim (*Soffits, Fascia & Frieze*)
- Low-Maintenance, 20-Year Warranty Windows
- 40-Gallon Rheem or Rudd Water Heater
- Dead Bolts on all Exterior Doors
- Designer Door Hardware Finishes including Oil-Rubbed Bronze and Antique Nickel
- One-Year Builder Warranty

Quality homes. Quality of life.

LOWDER NEW HOMES
A COLONIAL COMPANY... Since 1956

LOWDER NEW HOMES makes no representation, guaranty or warranty regarding the square footage, exact layout or specifications of the home based on this marketing material. Floor plans may be reversed on the home site. The rendering of the elevation of this home is an artist's interpretation only. Actual specifications are contained in the construction documents for a specific home site.



Craftsman-inspired homes made more
beautiful by nature.



St. Joe Elevation I

Shapiro



St. Joe Elevation II

Shapiro



St. Joe Elevation III