

{ the difference is }

**LOWDERNEW HOMES**  
A COLONIAL COMPANY... Since 1956



# WYNDRIDGE

## Villas

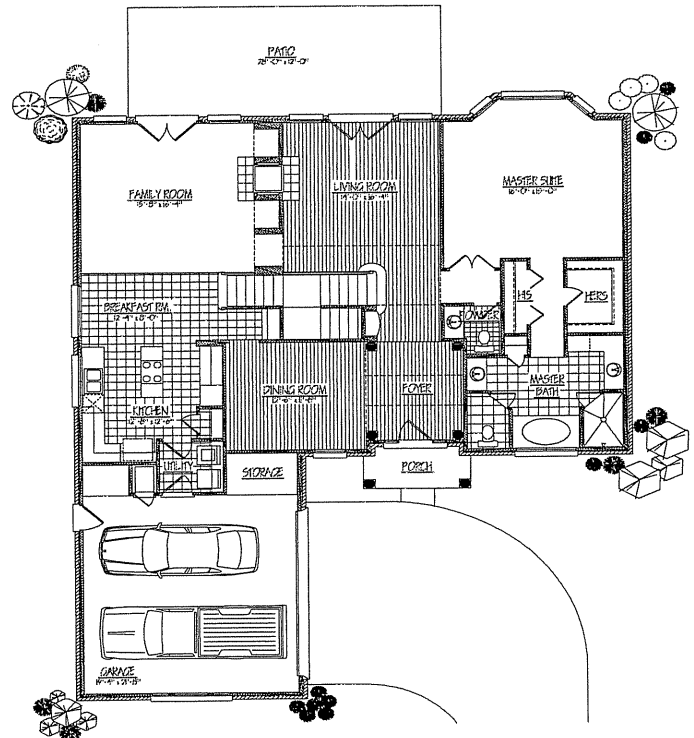
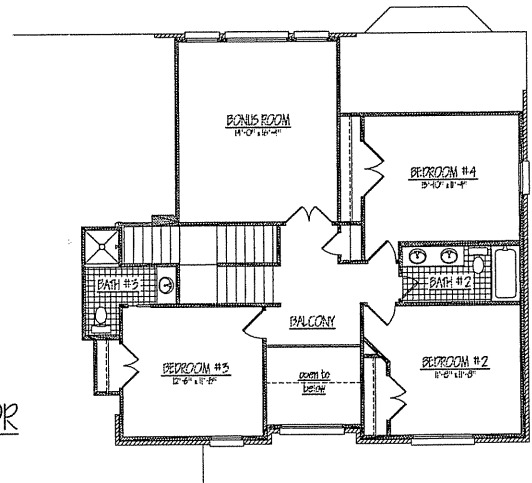
# THE PRESTWYCK

### PRESTWYCK

#### Features

- Custom Built on Job Site
- 25 Year Warranty Architectural Shingles
- Hardwood Flooring in Foyer, Living Room, and Dining Room
- Ceramic Tile Flooring in all Bathrooms
- Ceramic Tile Kitchen Counter Tops with Full Ceramic Tile Backsplash
- Whirlpool Tub in Master Bath
- Delta Faucets in all Bathrooms
- Spacious Walk-In Closets
- Pantry Closet in Kitchen/Breakfast Area
- Volume Ceilings
- Crown Moulding
- Contrasting Wall and Trim Colors
- Designer Cabinets
- Pre-Wired for Two Ceiling Fans
- Pre-Wired for Two Flood Lights
- General Electric Appliances Featuring a Self-Cleaning Range
- Fireplace with Gas Log Lighter
- Energy Efficient Doors, Windows, and Insulation
- Smooth Ceilings Throughout Interior of House
- Custom Interscapes Package Including: Prewire for Audio, Security (all exterior doors and windows), and Digital Network
- Landscaping Allowance
- One Year Builder Warranty
- Ten Year Structural Warranty

SECOND FLOOR



FIRST FLOOR

270-6600  
OFFICE

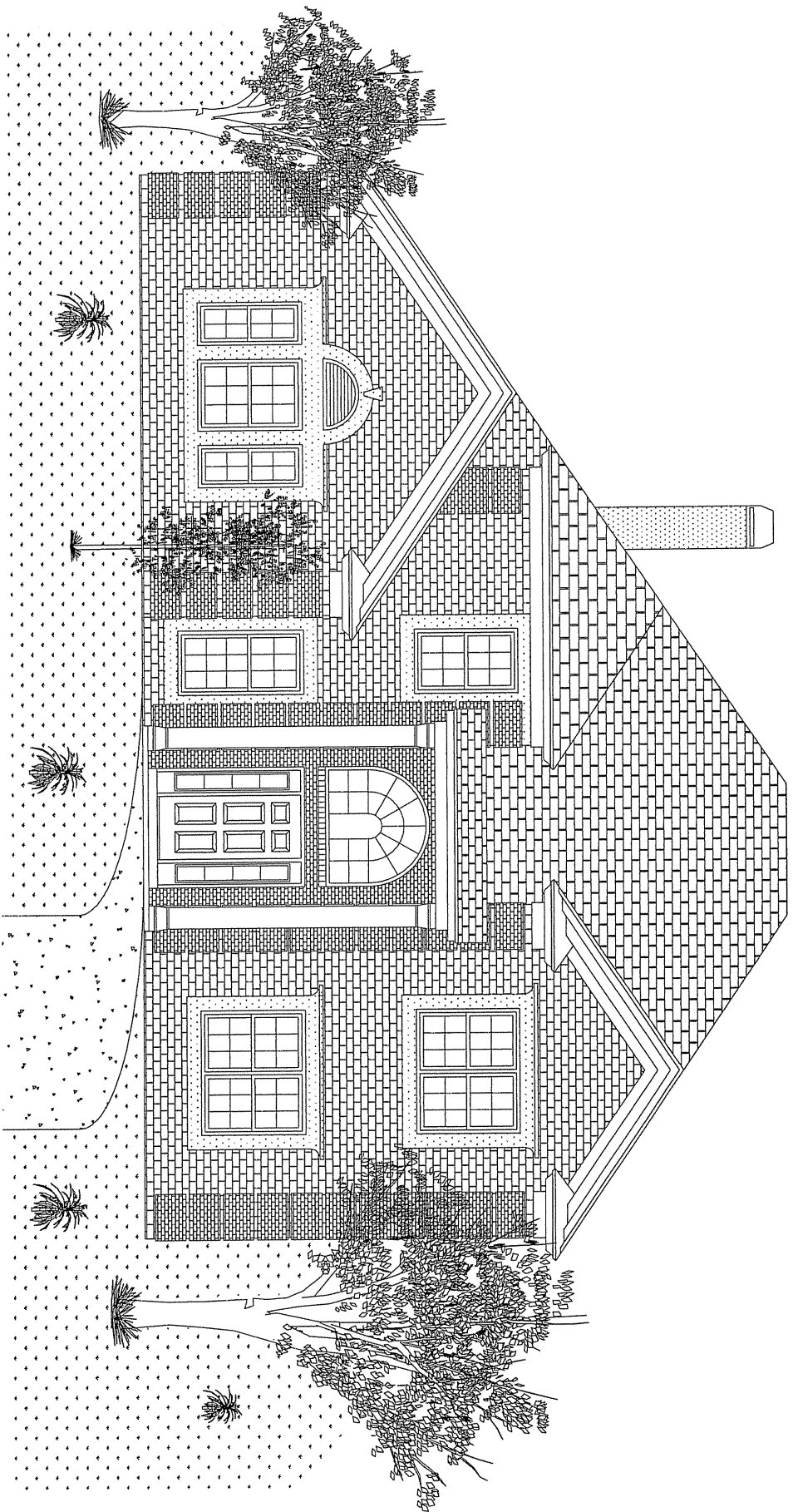
REV. 7/10/01

Prices subject to change without notice. All printed prices good for two weeks. LOWDER NEW HOMES makes no representation, guaranty, or warranty regarding the square footage, exact layout, or specifications of the home. The depicted floor plans, landscaping, and interior styling are artists' interpretations only. Actual specifics are contained in the plans and

2000 Interstate Park Drive, Suite 401 • Montgomery, AL 36109 • 334.270.6789 • [www.lowdernewhomes.com](http://www.lowdernewhomes.com)



EQUAL HOUSING



**THE PRESTWYCK**